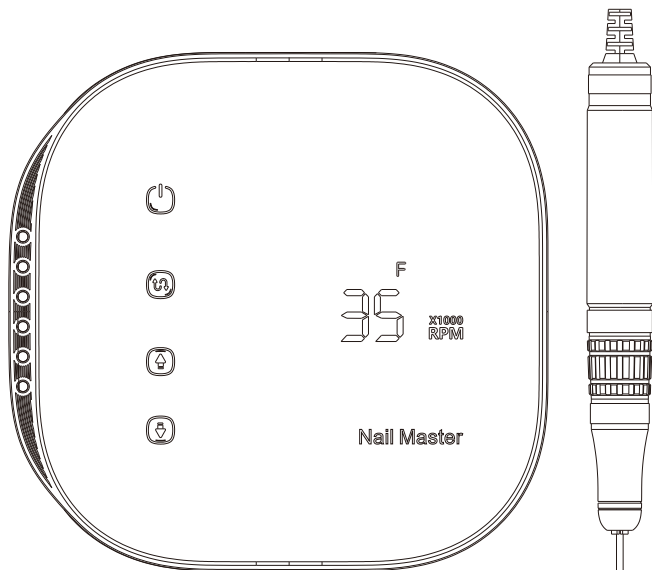


Nail Drill

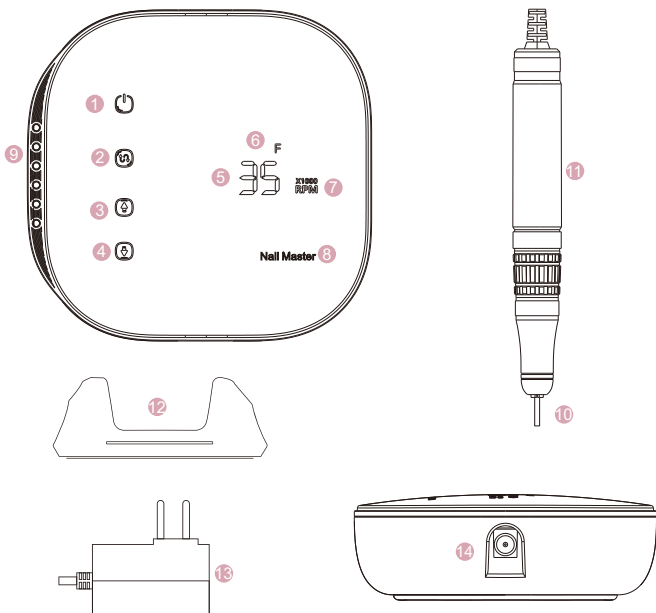
User Manual



JIMDOA makes you more attractive

JMD-S108

NAIL DRILL SYSTEM



- | | | |
|-------------------|------------------------------|------------------------|
| 1 On/Off | 6 Forward/Reverse Display | 11 Brushless Handpiece |
| 2 Forward/Reverse | 7 Speed Unit | 12 Base |
| 3 Increase Speed | 8 OEM Logo | 13 Power Adaptor |
| 4 Decrease Speed | 9 Magnetic Bits Holder Holes | 14 Charger Hole |
| 5 Speed Display | 10 Bits | |

SPECIFICATION

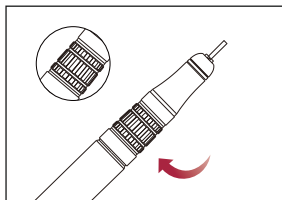
- 1.Power: 48W
- 2.Input Voltage: DC 24-2A
- 3.Weight:1.2kg
- 4.Dimension:L265*W241XH72mm
- 5.Speed:0-35000RPM

PRECAUTION

- 1.Do NOT disassemble the handpiece
- 2.Do NOT drop the handpiece
- 3.Do not work in a humid environment.
- 4.Operating Environment Humidity:30-75%
- 5.Operating Environment Temperature:+10°C~26°C
- 6.Turn off the power when changing the bits
- 7.Make sure the power switch is off before plugging in the power cord to avoid an unexpected injury due to sudden start.

SET AND OPERATION

1. Set drill bits

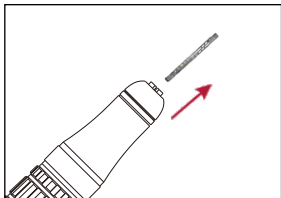


1

◀ Turn left side clockwise until you hear it click into the place

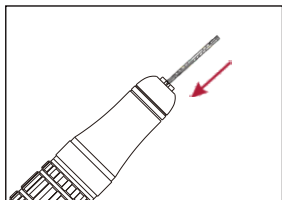
2

Take out the original bit ▶



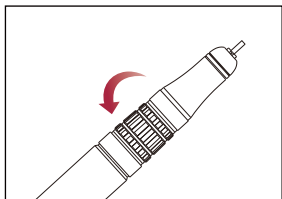
3

◀ Insert the 3/32 " size bit







4

Turn right side anti-clockwise ▶ to lock the bit tightly



2. Operation Steps:

- 1: Connect the power supply, the alternate light is flashing, indicating that the product is ready to enter the working state.
- 2: When you touch the on-off key “”, the function keys light up from top to bottom, and the machine enters the standby state.
- 3: When touching the forward and reverse “” keys, the machine will enter the working state. R stands for reverse rotation and F stands for forward rotation. Touch again to realize R / F conversion.
- 4: When touching the “” key, it is the upshift key 0-35 (RPM*1000), long press can continuously jump to 35 (RPM*1000), or adjust to the desired setting gear.
- 5: When the “” key is touched, it is the downshift key 35-0 (RPM*1000), long press can continuously jump to 0 (RPM*1000), or adjust to the desired setting gear.
- 6: Press the power button again, the machine stops working at this time, and the alternate light flashes to indicate that it is in standby mode.
- 7: Do not use the machine for a long time, please unplug the power cord.